



CHISHOLM CROSSING ADDITION SECTION 1

LOCATED N.W. 6TH & MUSTANG ROAD, CANADIAN COUNTY

132 RESIDENTIAL BUILDING LOTS
LOT SIZE – AVERAGE 65' X 125' AND LARGER

OKLAHOMA CITY UTILITIES, YUKON SCHOOLS

WILL FEATURE COMMON AREA WITH RELAXATION AND PLAY
AMENITIES

1,200 SQUARE FOOT MINIMUM HOME SIZE

60% BRICK OR ROCK EXTERIORS, 6/12 ROOF PITCH

NEIGHBORHOOD SIDEWALKS AND STREET LIGHTING

WILL FEATURE PERIMETER FENCING, LIGHTED ENTRY SIGNAGE,
AND SPRINKLERED LANDSCAPING

MANDATORY HOMEOWNERS ASSOCIATION

PLAT IS RECORDED, LOTS ARE SELLING
INTRODUCTORY LOT PRICING: \$27,500.00

AS A BUILDER, YOUR INDICATION OF INTEREST IS INVITED

INQUIRIES TO:

STEVE KLOPP

9701 N. BROADWAY EXTENSION

OKLAHOMA CITY, OKLA. 73114

SKLOPP@GARRETTANDCO.COM

405.840.3371 VOICE

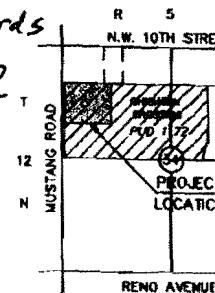
405.840.0625 FAX, OR VISIT US ON THE WEB AT

WWW.GARRETTANDCO.COM

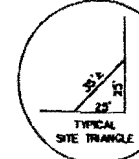
FINAL PLAT
OF
CHISHOLM CROSSING ADDITION
SECTION I

A PART OF THE NW 1/4, SECTION 34, T12N, R5W, I.M.
CITY OF OKLAHOMA CITY, OKLAHOMA
CANADIAN COUNTY

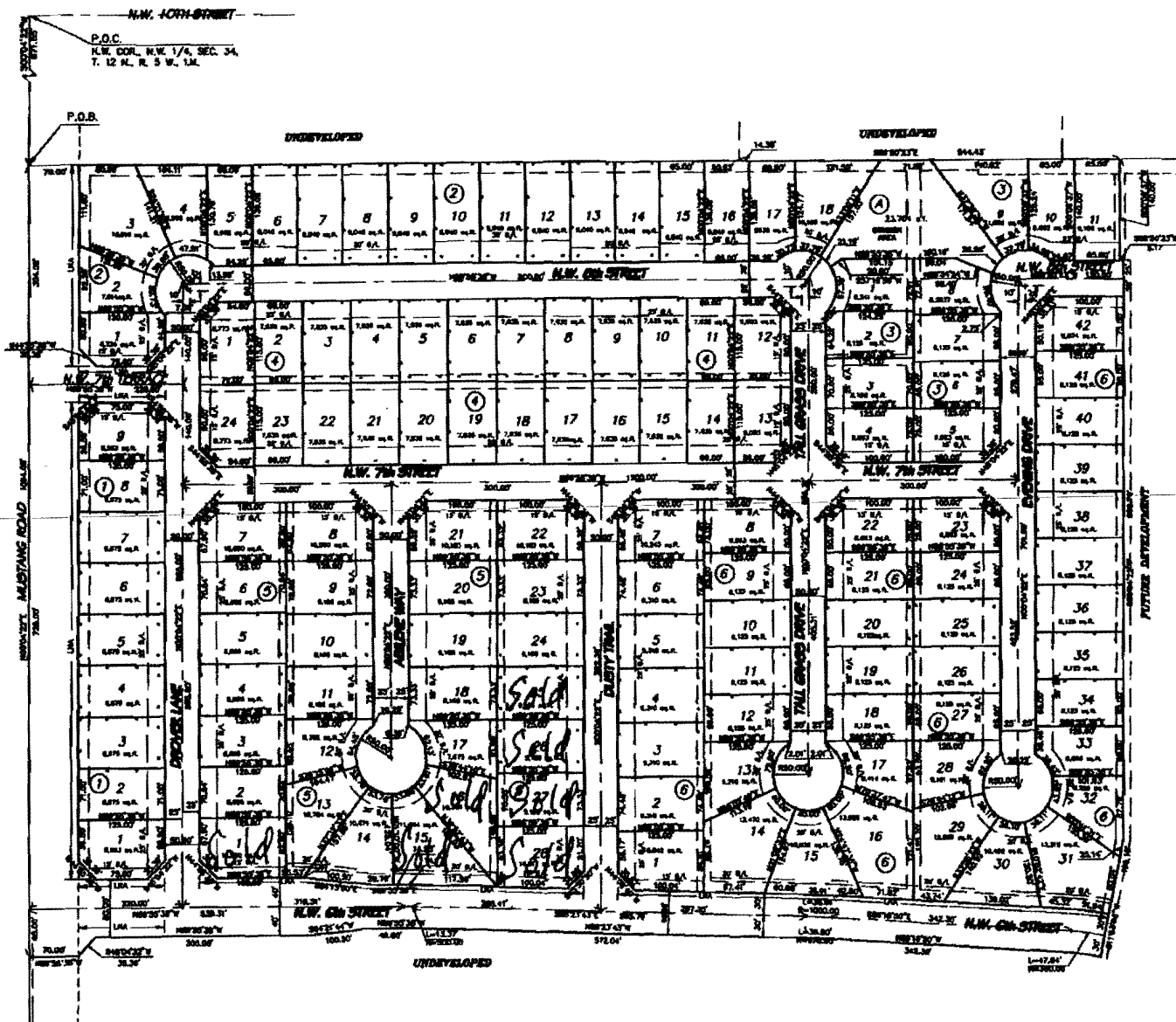
Plat recorded in Canadian County records
at Plat Book 9 Pages 281-282.



LOCATION MAP
NOT TO SCALE



○ INDICATES SET 1/2" x 1/2" x 1/2" CAP
● INDICATES FOUND 1/2"
■ INDICATES SET PER PLAN



GRAPHIC SCALE