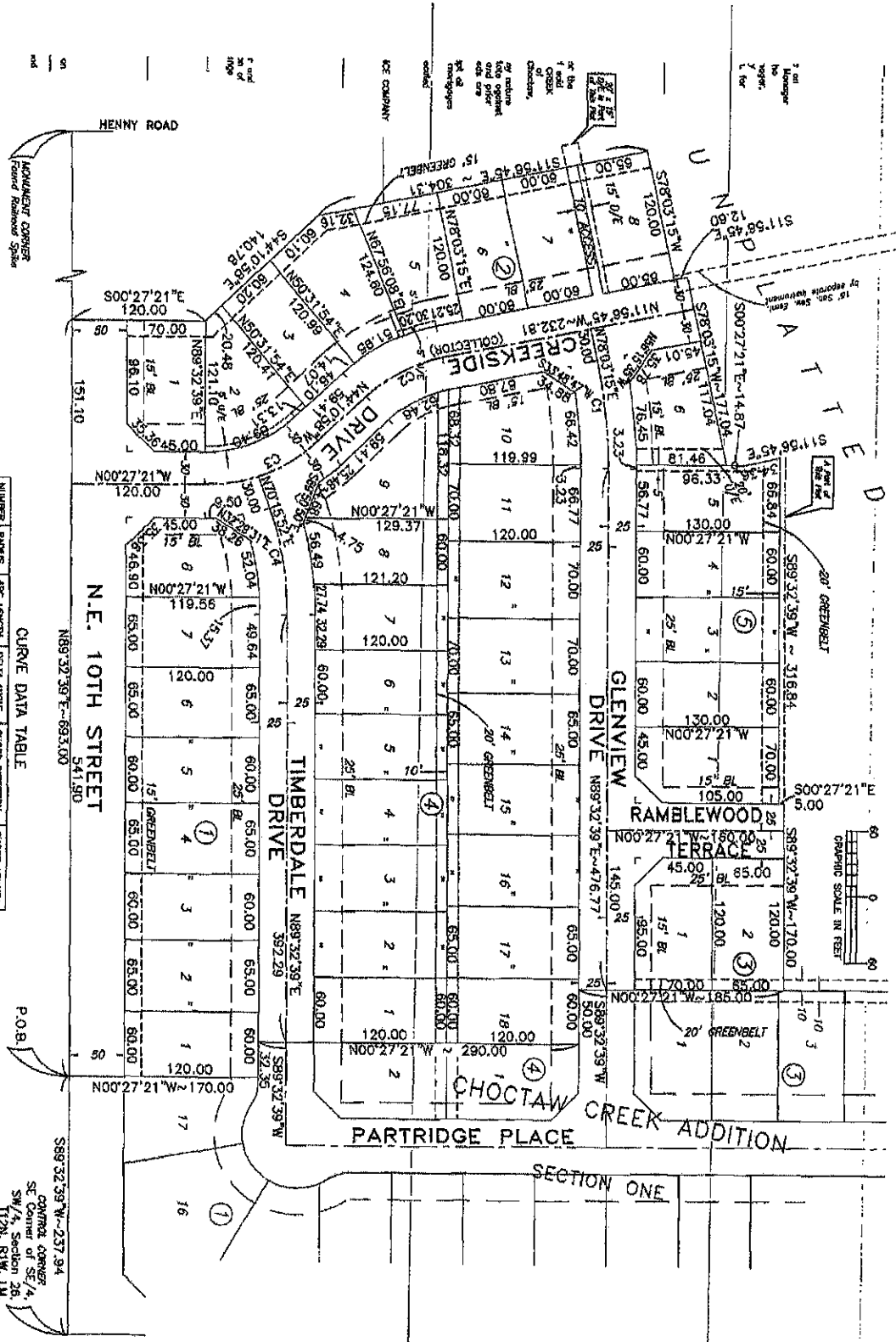
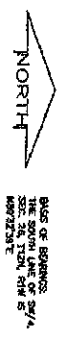


FINAL PLAT

CHOCTAW CREEK ADDITION

SECTION TWO

A SUBDIVISION OF A PART OF THE SW/4, SEC. 26, T-12-N, R-1-W, I.M.
CHOCTAW, OKLAHOMA COUNTY, OKLAHOMA



CURVE DATA TABLE

NUMBER	POINTS	ARC LENGTH	DELTA ANGLE	CHORD BEARING	CHORD LENGTH
C1	498.89	99.86	117°27'4"	S89°47'07"W	99.86
C2	141.01	78.24	37°14'13"	S28°03'17"E	78.24
C3	147.18	112.30	43°03'37"	N22°14'10"W	112.30
C4	284.37	98.05	181°54'7"	S79°04'15"W	98.05

MONUMENT CORNER
SE Corner of SE/4,
SW/4, Section 26,
T12N, R1W, I.M.
From Plat No. 138

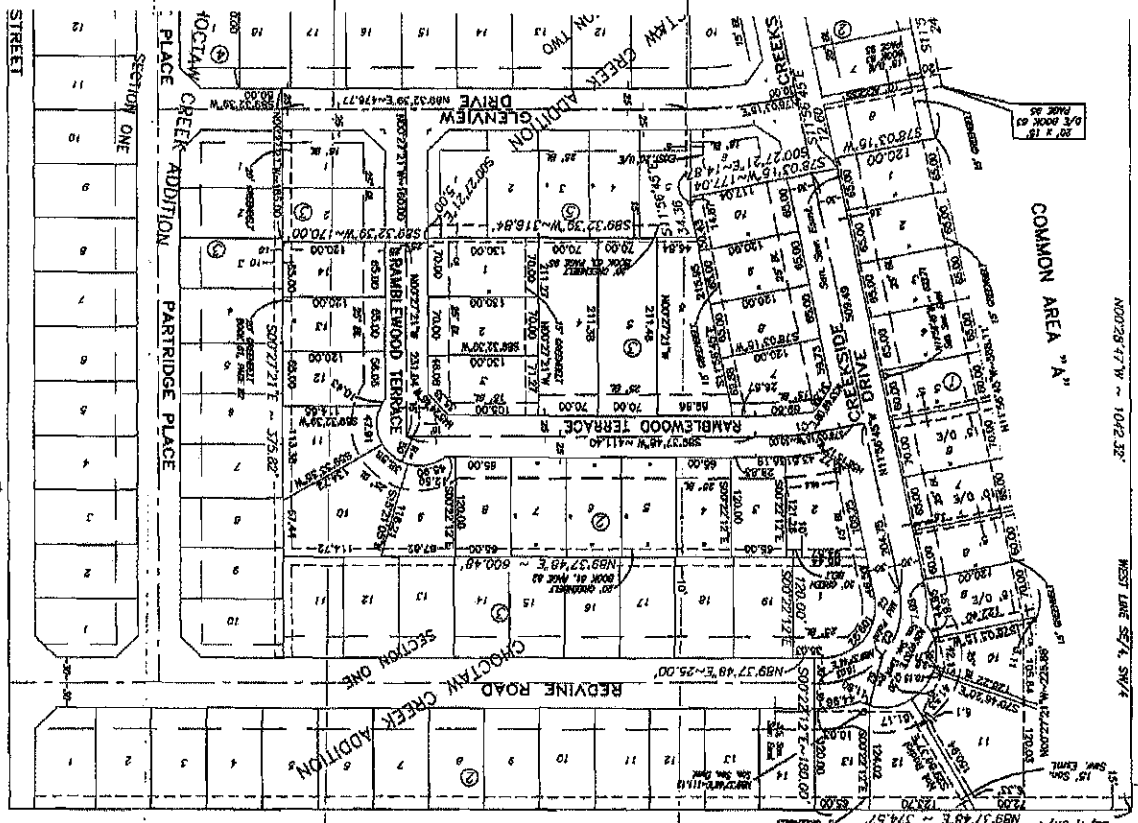
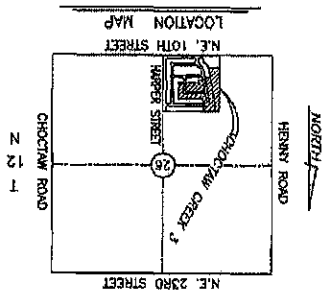
P.O.B.

S89°32'39"W ~ 237.94

1 2 3 4 5 6 7 8 9 10 11 12 13 14 15 16 17

CHOCTAW CREEK ADDITION SECTION THREE FINAL PLAT

A SUBDIVISION OF A PART OF THE SW/4, SEC. 26, T-12-N, R-1-W, I.M.
CHOCTAW, OKLAHOMA COUNTY, OKLAHOMA



CHOCTAW CREEK AT
A part of land in the
West of the Indian Act
description be based a
distance of 140.78 feet
from which the south
of said SE/4 SW/4 a
the plat thereof record
One a distance of 180
of 25.00 feet Thence
Thence N89°37'48"E on

UNPLATTED

UNPLATTED